



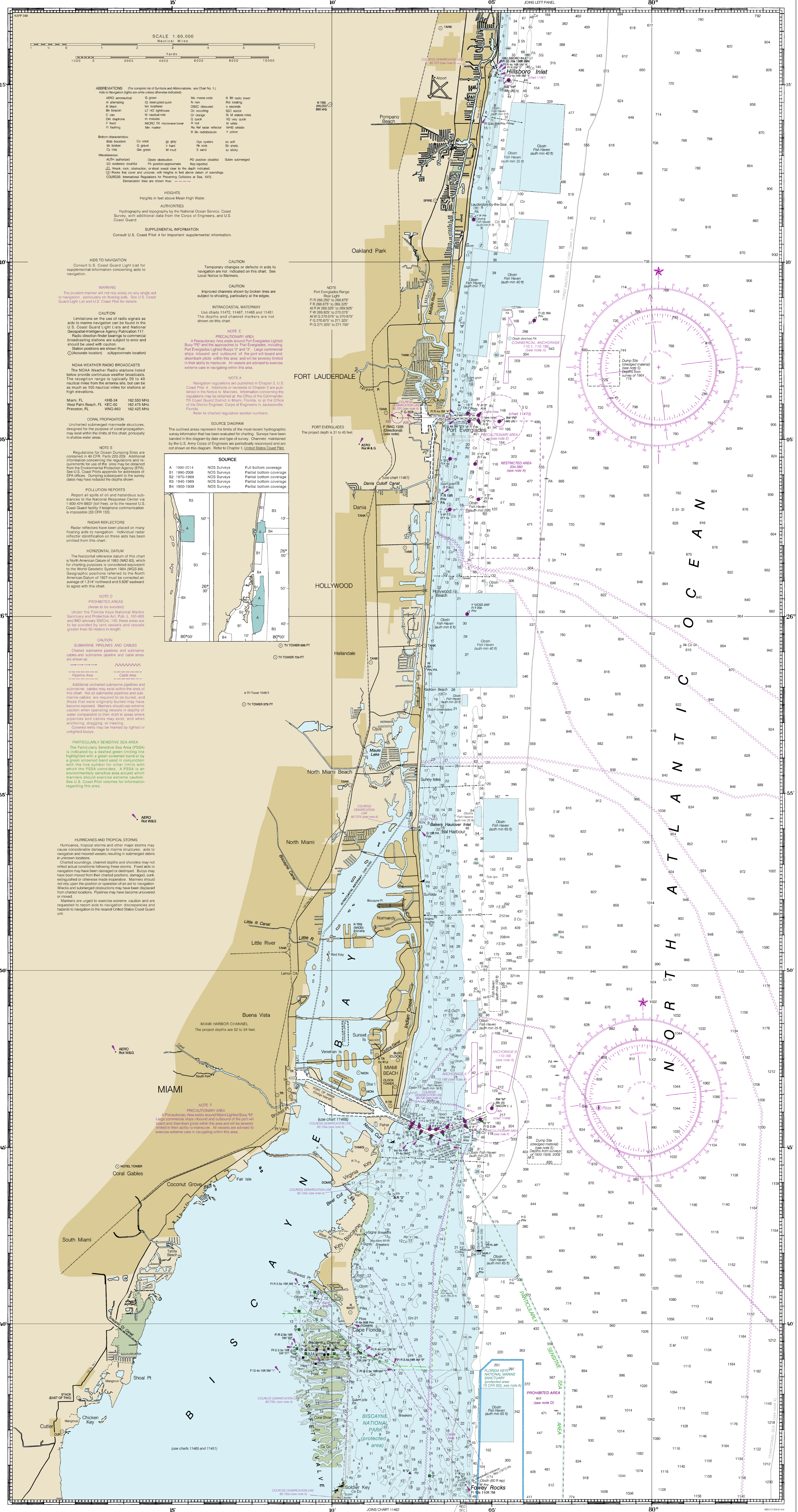
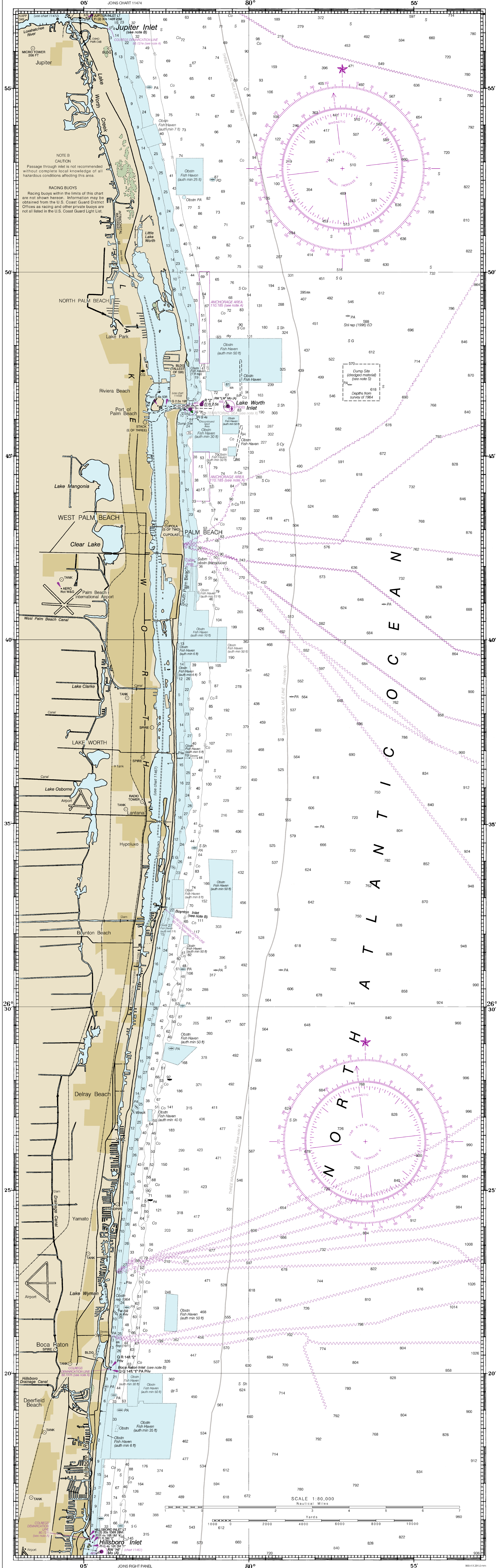
THE NATIONAL CHARTMAKER SINCE 1807
 UNITED STATES
 FLORIDA - EAST COAST

JUPITER INLET TO FOWEY ROCKS

Mercator Projection
 Scale 1:80,000 at Lat. 26°30' for Left Panel
 at 25°50' for Right Panel
 North American Datum 1983
 (WGS 84)
 SOUNDINGS IN FEET
 AT MEAN LOWER LOW WATER
 Additional information can be obtained at nauticalcharts.noaa.gov
 Form No. 1 (Rev. 11-81)

NOTE 1
 Within the 12 nautical mile Territorial Sea, established by Presidential Proclamation, some Federal laws apply. The Territorial Sea Law, promulgated as the outer limit of the territorial sea, is intended as a continuum to depict the jurisdictional limit of the other laws. The Territorial Sea Law, promulgated as the outer limit of the territorial sea, is intended as a continuum to depict the jurisdictional limit of the other laws. The Territorial Sea Law, promulgated as the outer limit of the territorial sea, is intended as a continuum to depict the jurisdictional limit of the other laws.

NAME	EASTINGS	DEPTH (FEET) TO BOTTOM OF SOUNDING (FEET)		
		Mean	High	Low
Lighted (each panel)	2027-2028	3.0	3.7	3.2
Lighted (this chart)	2027-2028	1.4	2.7	2.2
Lighted (other charts)	2027-2028	2.0	2.5	2.1
Lighted (other charts)	2028-2029	2.0	2.7	2.2
Lighted (other charts)	2028-2029	2.0	2.7	2.2
Lighted (other charts)	2028-2029	2.0	2.7	2.2



1466

1466

1466

1466

SOUNDINGS IN FEET

Jupiter Inlet to Fowey Rocks
 SOUNDINGS IN FEET - SCALE 1:80,000

Use this chart for the most up-to-date information. Reference to other charts may no longer be applicable.
 (POD) providers fulfill a vessel's requirement to carry a navigational chart published by the National Ocean Service in accordance with federal regulations, including but not limited to 33 C.F.R. 164.33(a), 33 C.F.R. 164.73(b), and 46 C.F.R. 28.225(a). POD charts meet stringent print standards and can be recognized by an official certification of authenticity printed on the chart. A list of POD providers can be found at: nauticalcharts.noaa.gov/pod