



UNITED STATES
FLORIDA - EAST COAST

PORT OF PALM BEACH AND APPROACHES

SOUNDINGS IN FEET

NOAA encourages users to submit inquiries, discrepancies or comments about the chart at <http://www.noaa.gov/charters>.

PROJECT DEPTHS
Channel depths and soundings, where indicated, reflect the U.S. Army Corps of Engineers (USACE) project depths. The information is significantly affected by the tides. For detailed information on the project depths, users are referred to USACE, www.usace.army.mil. USACE project depths are available at <http://www.usace.army.mil>.

NAME	LAT/LONG	Tidal Information		
		Mean High Water	Mean Low Water	Other
Port Palm Beach	26° 50' 00" N 80° 00' 00" W	3.0	2.0	1.0
Port Palm Beach	26° 45' 00" N 80° 00' 00" W	3.0	2.0	1.0

INTRACOASTAL WATERWAY
The project depths are 7' feet from North Palm Beach, FL to Fort Pierce, FL; 7' feet from Fort Pierce, FL to Miami, FL; 7' feet from Miami, FL to Coral Gables, FL; 7' feet from Coral Gables, FL to Fort Lauderdale, FL; 7' feet from Fort Lauderdale, FL to Palm Beach, FL; 7' feet from Palm Beach, FL to Port Palm Beach, FL.

1459

APPROXIMATE - For complete list of symbols and abbreviations, see Chart No. 1.

WIND - Direction and force of wind are indicated by the following symbols:

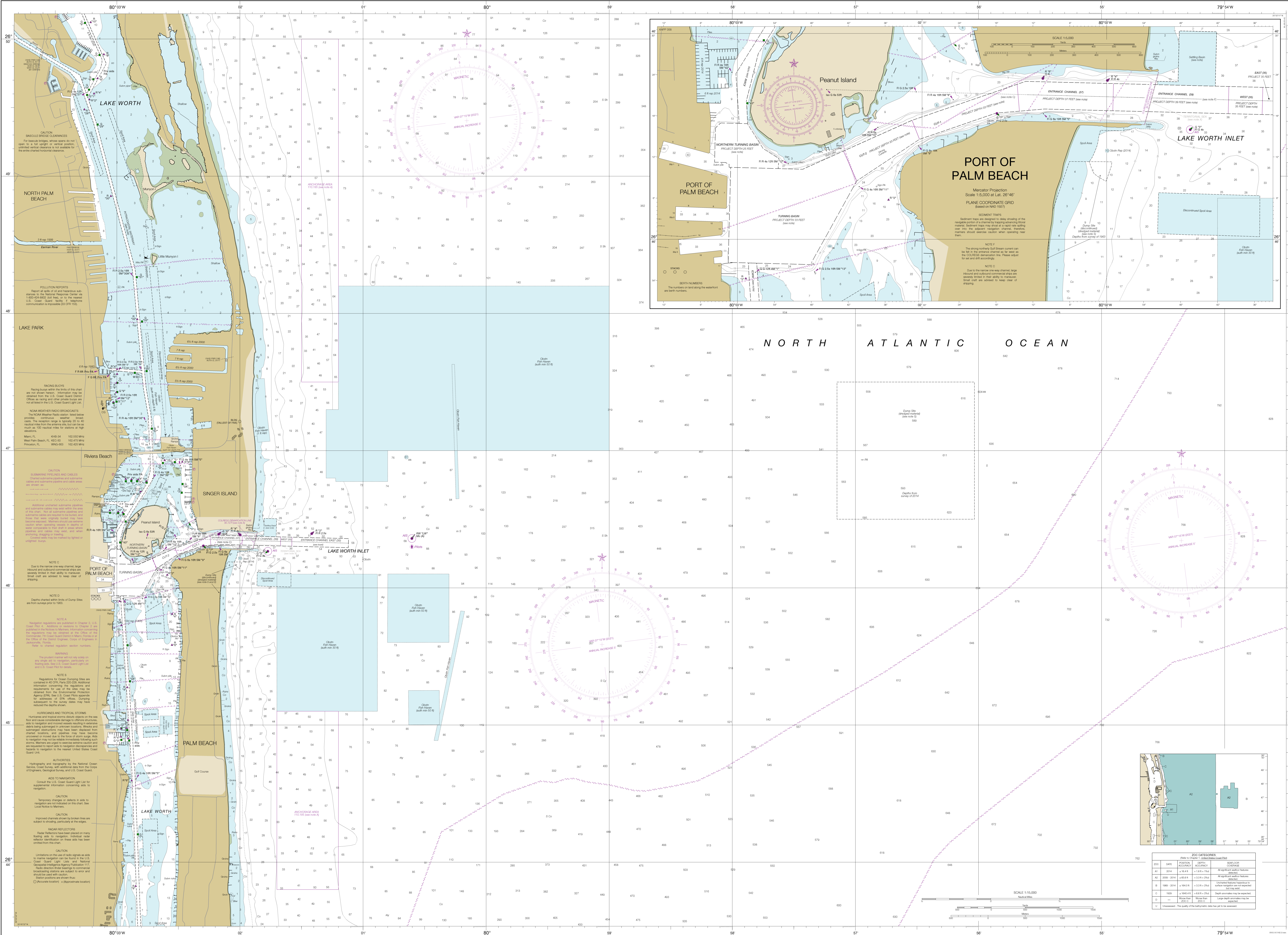
- W - Wind direction
- F - Wind force
- W - Wind direction
- F - Wind force

NOTE
When the 12-month interval, Terrestrial Sea, established by the International Hydrographic Organization, is used, the 12-month interval, Terrestrial Sea, established by the International Hydrographic Organization, is used. The 12-month interval, Terrestrial Sea, established by the International Hydrographic Organization, is used.

Scale 1:15,000 at Lat. 26° 46' North American Datum of 1983 (NAD 83) Geoid (Mean Sea Level)

Meridian Projection
Scale 1:15,000 at Lat. 26° 46' North American Datum of 1983 (NAD 83) Geoid (Mean Sea Level)

SOUNDINGS IN FEET AT MEAN LOWER WATER



11459

This is the last edition of this chart. It will be cancelled on July 2, 2023.

CAUTION
This chart has been corrected from the Notice to Mariners, published weekly by the National Oceanic and Atmospheric Administration (NOAA). The information on this chart is current as of the date shown in the lower left hand corner and is available at www.nauticalcharts.noaa.gov.

SOUNDINGS IN FEET

Published at Washington, D.C.
U.S. DEPARTMENT OF COMMERCE
NATIONAL OCEANIC AND ATMOSPHERIC ADMINISTRATION
NATIONAL CHART SERVICE
COAST SURVEY

DATE	POSITION	DEPTH	REMARKS
2000	26° 50' 00" N 80° 00' 00" W	3.0	At right angle to the channel
2001	26° 45' 00" N 80° 00' 00" W	3.0	At right angle to the channel
2002	26° 40' 00" N 80° 00' 00" W	3.0	At right angle to the channel
2003	26° 35' 00" N 80° 00' 00" W	3.0	At right angle to the channel
2004	26° 30' 00" N 80° 00' 00" W	3.0	At right angle to the channel
2005	26° 25' 00" N 80° 00' 00" W	3.0	At right angle to the channel
2006	26° 20' 00" N 80° 00' 00" W	3.0	At right angle to the channel
2007	26° 15' 00" N 80° 00' 00" W	3.0	At right angle to the channel
2008	26° 10' 00" N 80° 00' 00" W	3.0	At right angle to the channel
2009	26° 05' 00" N 80° 00' 00" W	3.0	At right angle to the channel
2010	26° 00' 00" N 80° 00' 00" W	3.0	At right angle to the channel

Port of Palm Beach and Approaches
SOUNDINGS IN FEET - SCALE 1:15,000

11459